

# bott vario3

In-vehicle equipment

**bott**

Innovative  
system solutions

Maximum  
safety



Lightweight aluminium  
construction

	Page
Insights	4 – 5
Sustainability	6 – 7
Quality standards	8 – 9
Crash tested	10 – 11
Your idea - our planning	12 – 15
Ergonomics	16 – 17
Range of services	18 – 19
System digitalisation	20 – 21
bott vario3	22 – 23
Module packages	24 – 25
Module features	26 – 27
Floors & linings	28 – 29
Under floor module & sliding platforms	30 – 33
bott varioCar	34 – 35
Load restraint	36 – 45
Accessories	46 – 47
Mobile workstation	48 – 53
Organisation systems	54 – 61
Case systems	62 – 69
Lighting & power	70 – 77
Roof rack systems	78 – 79
bottTainer	80 – 83

## Equip your vehicles



You will often encounter new challenges in your daily work - we will help you to overcome them.  
Your vario3 in-vehicle equipment is designed specifically for you, with everything you need being securely stored and easy to access.



Improve your efficiency -  
choose bott.

# Insights

For almost 90 years we have offered our customers all over the world a wide-ranging product portfolio, the highest-possible quality and a first-class service. In particular, the high level of customer satisfaction ensures bott's continued growth.

Innovation has the highest priority at bott. With us you'll invest in a modern, long-term solution and therefore in lasting success.



Founded: 1930  
Turnover: 144 million € (2019)  
No. of employees: 1,050 (2019)  
vehicles equipped: 55,000 per year

90 years



## Experience makes the difference

As a long-term global partner, we supply consistently high-quality products, services and solutions that offer excellent value for money. The result is an exceptional customer experience. We deliver intelligent workplace and mobility solutions for tradespeople and companies who are targeting greater operational efficiency or simply a better use of space.

To this end, we combine our innovative, high-value products and services with new technologies to create integrated, market-leading solutions that are based on a thorough knowledge of customer needs. In a fast-changing world, we must be agile and flexible. In a dynamic environment, we are constantly learning, working together on an international level and coming up with new products.

# Sustainability

Having a sense  
of responsibility

Saving resources

Protecting the environment





## Our contribution to society

We have a solid basis as a family-run company, we act in a responsible way with an awareness of quality, and plan for the long term. We endeavour to save the environment and preserve natural resources. We make a positive contribution to society through our work.

Our products are robust and long-lived. They are thus both economically and environmentally sustainable. Due to its low weight, bott vario3 in-vehicle equipment is ideally suited for use in commercial vehicles with alternative forms of propulsion.

# Quality standards

Certified in accordance with  
DIN EN ISO 9001

Certified environmental management  
in accordance with ISO 14001

Certified







## Certified quality standards

The quality of the integrated components is our top priority. The large commercial vehicle brands have awarded us approved vehicle converter status. This means that bott achieves very high proven standards of service and product quality. All our employees receive regular training and are therefore always up to date with technical requirements and needs. In this way we

guarantee that you will always be safe on the road with our products and services. In our inspection reports we document exactly what we have installed in the vehicle and how it is integrated. Your satisfaction and safety is our greatest concern.

# Crash tested

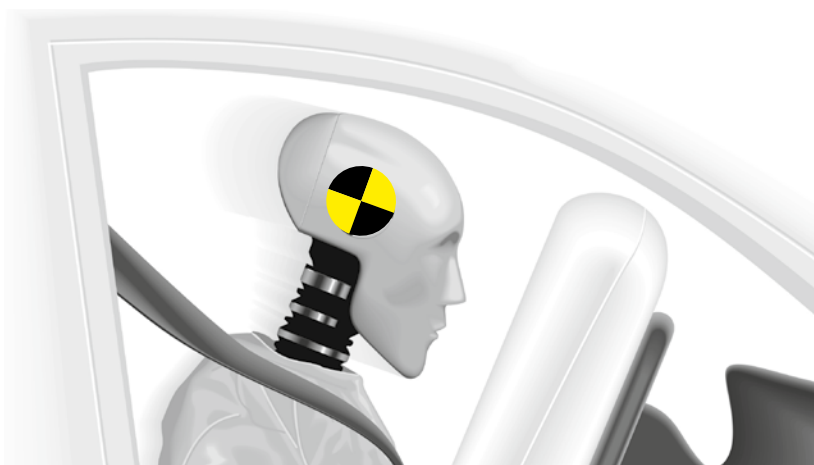
Safety for driver and load

Meets the ECE R44  
standard

50 km/h impact speed

**bott vario3 in-vehicle equipment always meets the high requirements of the tests. The results demonstrate that the driver and the front passenger can rely on bott vario3 in case of emergency.**

To the crash test.



High-speed camera recordings



## Proven safety

Our crash tests have proven how safe the bott vario3 in-vehicle equipment is for you and your employees. Independent experts conduct the tests with a fully-loaded vehicle. The load on the components is equivalent to that experienced during a traffic accident.

The crash tests simulate the collision of the vehicle with an obstacle at a speed of 50 km/h - in accordance with ECE directive R44. The bott vario3 in-vehicle equipment more than meets the strict requirements of the tests.

In an emergency you can completely rely on bott vario3 in-vehicle equipment.

The tests particularly focus on the fixing points to the bodywork on the floor and the side walls of the vehicle. The overall construction of the in-vehicle equipment is also important. The tests clearly show how it absorbs the enormous forces through systematic torsion of the components. We also pay great attention to all moving parts. Nothing will fall off the shelves and the drawers remain tightly closed.

# Your idea - our design

Flexible modular system

Customised solutions

Experienced designers

Make the best use of the  
space available



## Tailored, to suit your needs

Together with your bott planning expert you can customise the bott vario3 in-vehicle equipment to your individual requirements. With the help of a 3D visualisation, you can very quickly get an idea of what your new system will look like - you may well want to rethink it and change one thing or another. The bott team will focus on your requirements for your daily work. The planning begins with a detailed analysis of your needs. We take a close look at the equipment that you must have on a daily basis for your work.

Then our planning experts draw up a precisely-tailored van racking concept. The modular layout of bott vario3 in-vehicle equipment allows it to be configured to meet your needs. All tools and materials can be stowed where they are close to hand. A well designed mobile workspace reduces search times and makes your daily tasks easier.



Alternatively design your own mobile workspace using our new bott online configurator.



## Our implementation





## Our implementation



# Ergonomics

Motivation and health

Efficiency and  
reduced search times

Make the best use of the  
space available



## Ergonomic working conditions

Ergonomics is one of the most important criteria when designing a workplace. Especially so in service vehicles. Ergonomically laid out vehicles can have a positive long-term impact on the health and wellbeing of both you and your employees and are intrinsically linked to the success of your business. We design all of our products from an ergonomic standpoint.

The bott vario3 in-vehicle equipment offers easily accessible storage spaces. We offer an under floor module for compact commercial vehicles. The drawers with full extension slides make use of the entire depth of the

cargo area and allow for easier access to equipment and materials without having to bend and stretch into the van. This saves your back and ensures efficient and economical working. Ergonomic access to materials and equipment is greatly simplified by using a module with drawers that open in the direction of travel just inside the sliding door.

# Range of services

Services for fleets

Full-service solution

Digital development  
process

After-sales service



## Conversion of service fleets

We offer a full service for fleet managers and take care of everything for you. Over many years of collaboration with trade and fleet customers, leasing providers and automotive manufacturers, we have gathered a great deal of experience in various different sectors and customer segments.

Because of this experience, we are well placed to advise you during the configuration process.

This allows us to ensure that the vehicle's cargo area is optimally configured for the desired application.

We offer a one stop shop approach for your service vehicle fleet. Your vehicle can be delivered to us directly from the manufacturer. Thanks to the digital management process, we always know the status of your vehicle at any given time. We would also be glad to handle the first inspection before we deliver your vehicle to you. We can also manage your fleet logistics requirements if you need vehicle deliveries to multiple different locations. We are able to offer you a one stop shop solution for all of your fleet requirements.

# System digitalisation

Control devices  
for extra functions

Faster replenishment of  
tools and materials

An app for opening and  
closing the vehicle

Organised supply of  
materials with  
pick-to-light





## Control and communication

We can provide innovative additional components for bott vario3 in-vehicle equipment on request. You can control these additional functions with our vendor-independent controller.

Moreover our large network of partner companies enables a modern organisation and control of your daily processes. For example, for the replenishment of consumables:

With the mobile refill app you can order a replacement at a construction site and have it delivered to your vehicle even overnight. The bott keyless entry solution allows the courier to access the vehicle.

bott's pick-to-light system always visualises the right storage place for all tools and material for you in your next service job. Our reliable mobile broadband on-board Internet connection provides stable communication and data transfer even in remote places.

bott vario3

Rest assured

More options  
than ever

It was never this easy



## The in-vehicle equipment

bott vario3 in-vehicle equipment features our comprehensive, cleverly-designed modular system. This system ensures that every commercial vehicle can be fitted out to match the user's needs.

The new modules are very light yet robust. They are available in numerous sizes and leave nothing to be desired in the individual planning of a vehicle. Choosing the best combination of components, you'll get a vehicle that is perfectly suited to your needs. We will organise the available storage space in the most practical way to suit your business depending on the sector and your vehicle.

Working with you, we'll store the equipment and distribute the weight evenly in the vehicle. The modular construction of bott vario3 offers countless possibilities for arranging all the equipment to ensure that your day runs efficiently.



reddot winner 2020

# Module packages



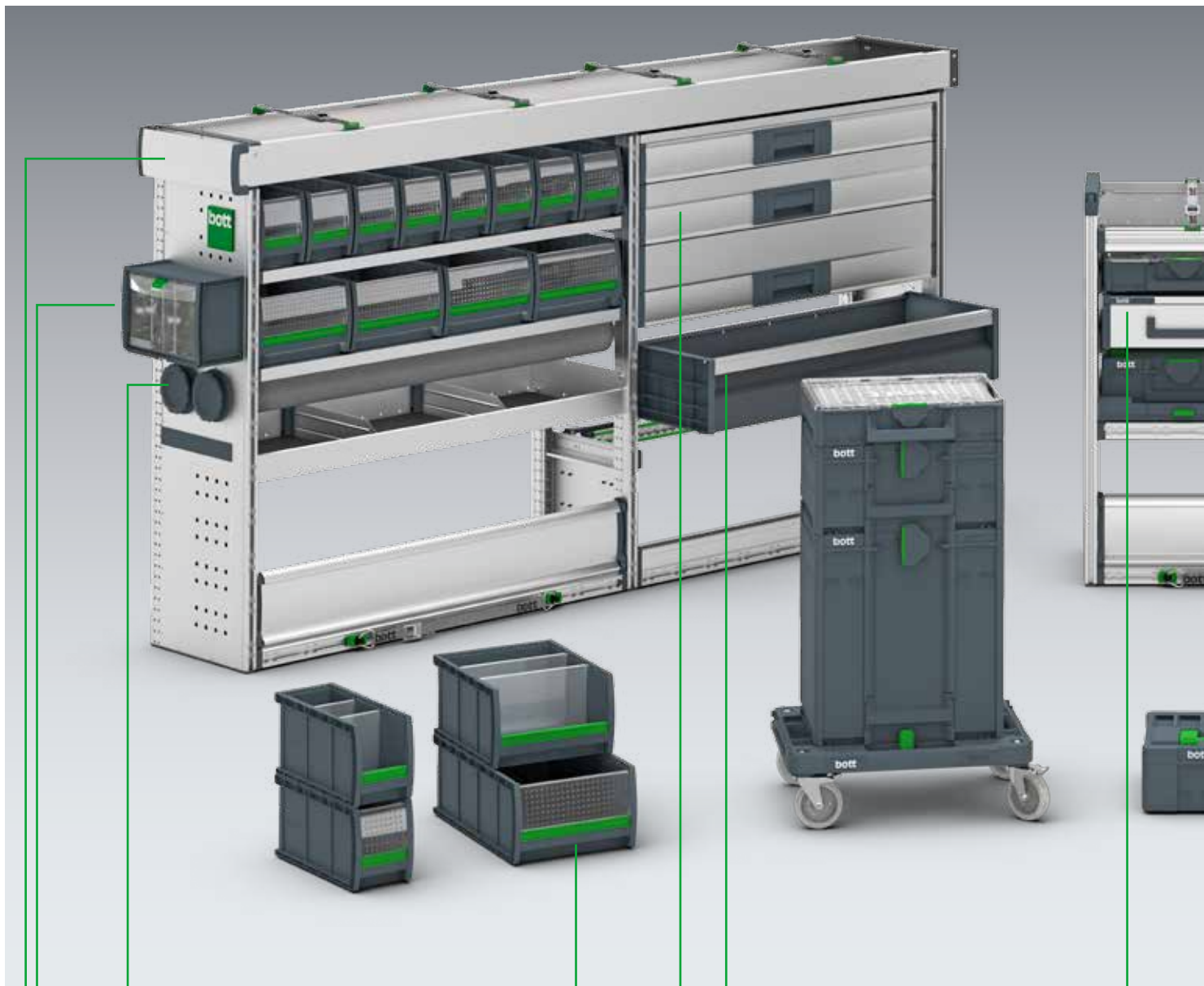




## bott vario3 for any size of vehicle

Whether you have a car or a small, medium or large van: We have the matching solution for any size of vehicle and any requirement. We can plan your in-vehicle equipment to make ideal use of the load space you have available. No matter whether you prefer to maximise storage space or load capacity: We will make sure that your tools and material are tidily and securely stored.

# Module features



**Long item holder**  
for easy transport of long  
and heavy tools



**TiltBox**  
for the practical storage of small parts  
and consumables



**Long item top tray**  
for the safe storage of pipes  
and profiles



**varioSlide**  
lightweight drawers with a  
generous usable volume



**Drawers**  
with 100% extension telescopic  
slides and 70kg load capacity



**bottBoxes**  
practical storage boxes for  
service vehicles and workshops





**bott vario3 V-Box**  
practical storage compartment for small tools and accessories



**Systainer<sup>3</sup>**  
flexible system case in two widths and six heights



**Systainer<sup>3</sup> Organizer**  
practical small parts case compatible with all Systainer<sup>3</sup> products



**varioCase**  
service case made from lightweight aluminium or robust sheet steel



**Rotated drawers**  
can be accessed ergonomically from outside the vehicle



**Shelf with C-Lash**  
makes it easy to restrain loads inside the shelves



**Lashing rails and tie-down points**  
integrated throughout the entire system for the safe transport of materials and power tools

# Floors & Linings

A diagram of a truck body interior, represented by a dark gray rectangle. A vertical green bar is on the left, and a horizontal green bar is at the top. Green lines connect these bars to three text labels: 'Robust bodywork protection' at the top, 'Versatile attachment points for load restraint' in the middle, and 'Easy-to-clean load space' at the bottom.

Robust bodywork protection

Versatile attachment points  
for load restraint

Easy-to-clean load space



## The solution for load space protection

Vehicle specific floors and linings from bott protect the load space against damage in day to day use and help retain the value of your vehicle for the long term. Floors, side linings and, if required, even roof liners are available. The bott vario floor panel is firmly attached to your commercial vehicle. The floor panel has an anti-slip coating, so that you always have a firm footing – even in wet weather. Fitting inner panelling protects the paint work and thus maintains the value of your commercial vehicle.

Our side lining is available in various configurations; made of recyclable plastic or perforated aluminium sheet for use with bott perfo tool hooks and holders.

A roof liner finishes off your load space lining. Further lashing rails for attaching shoring poles can be integrated in the roof liner –with integrated LED lighting. The integration of internal lighting is an essential addition for those working at dawn/dusk or during the night.

# Under floor modules and sliding platforms

Quick access to tools  
and materials

Load space  
organisation at  
two levels

Generously-sized load  
space for large items to  
be transported



## bott vario3 under floor modules

A bott under floor module offers a great deal of additional storage space for your vehicle. It fits exactly into the contours of the interior of your vehicle. The under floor module divides the load space into two levels. Equipment can be neatly stowed away in the drawers under the floor panel. They provide convenient and ergonomic access to tools and materials from the outside via the rear and side doors of the vehicle.

The storage space under the load area protects against theft, since the contents of the drawers cannot be seen from the outside. The sturdy floor panel on the under floor module has an anti-slip surface. The integrated lashing rails make it easier to secure the load. In addition, bott vario3 modules can be fixed on top.

## Under floor modules



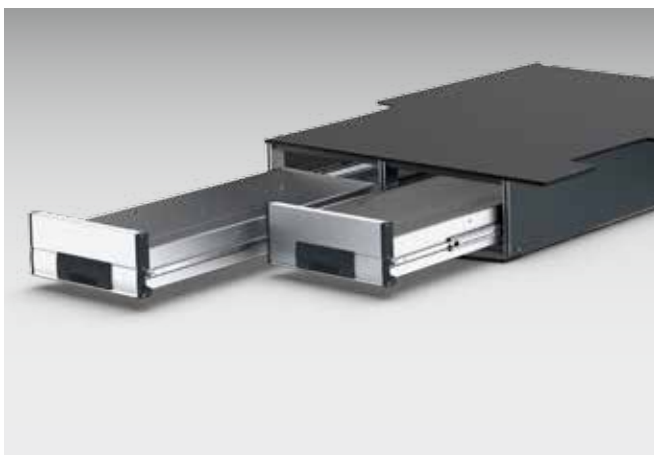
### Lower level

- Flexible access to the lower level via the rear and side doors
- Optimal subdivision of the space through drawers, Euroboxes and drop-front shelves that can be planned individually
- Large-volume heavy duty drawers with full extension slide allow ergonomic access from outside the vehicle



### Upper level

- The load area can be used fully for large and bulky items
- The sturdy floor panel with anti-slip surface and integrated lashing rails allow rapid and easy securing of the load
- Optional addition of bott vario3 modules or sliding platforms also possible



### bott vario3 under floor modules

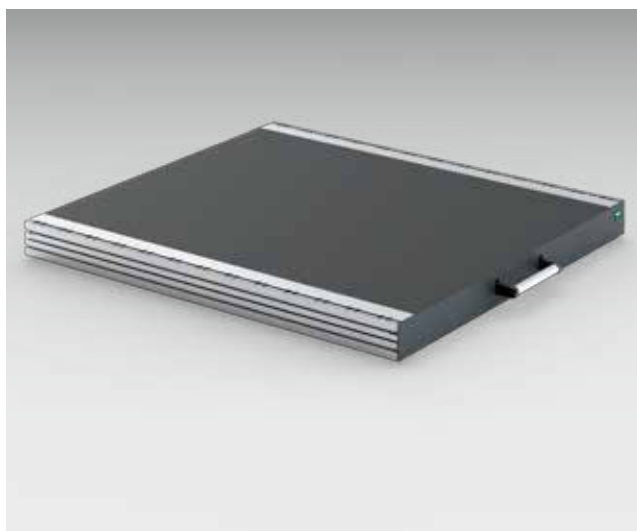
- Divides the load space into two levels and thus ensures optimal utilisation of the storage space
- Creates variability in the load space and thus permits large and bulky items to be transported efficiently and safely in the vehicle at the same time as tools and consumables
- Provides passive theft protection, since the transported materials and equipment are not visible in the lower level
- Can be planned flexibly to suit all types and sizes of vans and pickups



## Sliding platform



**bott vario sliding platform with full extension slide**



- Smooth-running heavy duty sliding platform with 200 kg load capacity
- For the transporting of large and heavy objects (machines, transport boxes, or the like)
- Ergonomic access to the cargo thanks to 100% full extension slide
- Can be locked when open, making easy loading and unloading of heavy and bulky objects possible
- Flexible load restraint thanks to lashing rails with airline profile integrated on both sides
- Simple and safe operation thanks to the large and ergonomic handle
- Sturdy structure made of lightweight aluminium and durable sheet steel, with anti-slip plastic surface panel
- Can be fixed directly on the vehicle floor

# bott varioCar

All neat and tidy in  
the car boot

Flexible load securing  
in cars

Perfect integration of  
the Systainer<sup>3</sup>



## Tidiness and load restraint in a car

Load restraint is not in itself a topic that solely concerns commercial vehicles. This is just as important for service fleets that consist primarily of estate cars, as here also load restraints are a legal requirement. This is of particular importance if heavy loads or numerous tools and spare parts are regularly carried.

With bott varioCar you have many simple options to organise your equipment neatly and to lash it down. The sturdy boot floor inserts are anchored to the lashing eyes provided in the car by the manufacturer.

The surface mounted lashing rails offer you a lot of flexibility when it comes to securing loads.

- Light and sturdy plastic panel
- Two airline lashing rails
- Optional support rails especially for Systainer<sup>3</sup>
- Two lashing straps with airline fitting and cam-buckle
- Rapid attachment of the floor insert to the existing lashing eyes in the vehicle
- Model-specific solutions for all current estate cars and MPV's

# Load restraint

Load restraint made easy

Safety for driver and load

Always legally compliant



## Safe on the road

All system components of the bott vario3 in-vehicle equipment offer innovative possibilities for simple load restraint. Your materials and equipment are always stowed safely. Either with the tried-and-tested airline lashing rails or with our new C-Lash restraint, which is so simple to use. C-Lash is so flexible and easy to use that lashing straps can be secured to our unique aluminium profiles with just a flick of the wrist.

Loads and equipment can be secured and protected from damage in any driving conditions, even when the road surface is damaged and poorly maintained. Within our wide product range you'll find the right type of load restraint for any application you could wish for.



## Shelf load restraints



### C-Lash - the innovative bott vario3 load restraint

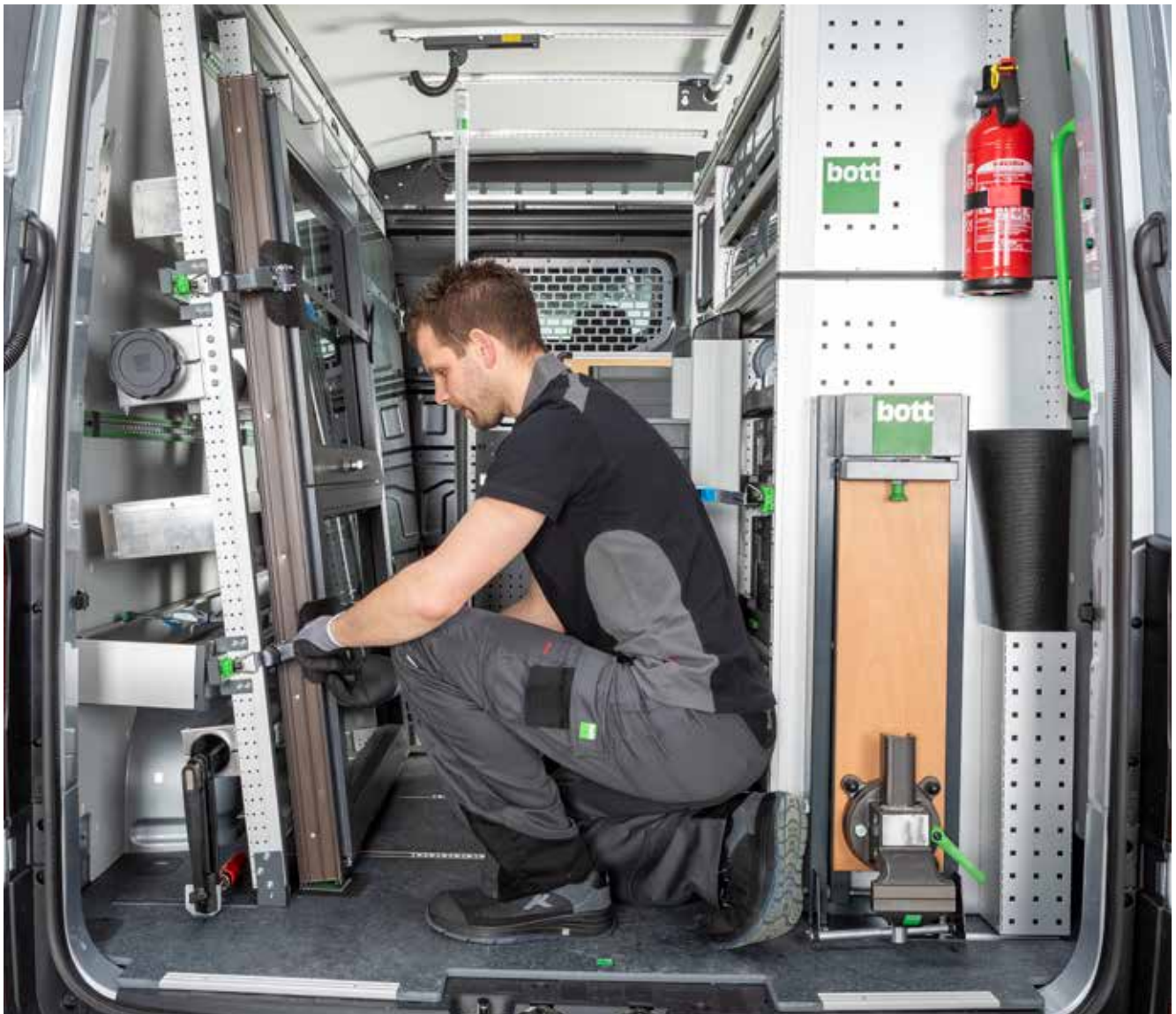
- Makes quick and flexible load restraint possible
- The patented system for convenient operation and using just one hand
- Can be integrated into shelves or directly into end frame profiles
- Infinite adjustment
- Can be locked in any desired position

## Shelf load restraints





## Shelf load restraints



## Shelf load restraints



### Airline profiles

- Widely available open standard in the market in the field of load restraint systems
- Horizontal and vertical integration of airline lashing rails in many bott vario3 components, both in the floor and roof areas
- Allow rapid and simple load restraint by means of lashing straps and shoring poles with a comprehensive range of additional accessories

## Vehicle load restraints



### Lashing straps

- comprehensive range of straps for every requirement
- available in different lengths, with different end fittings and tightening mechanisms to suit any application



### Shoring poles

- Perfectly suited for restraining sheet goods or bulky items such as doors, windows or furniture etc.
- Lengths can be adjusted quickly and without tools
- Suitable for horizontal and vertical use
- Circumferential rubber coating for increased slip-resistance as well as protection against abrasion



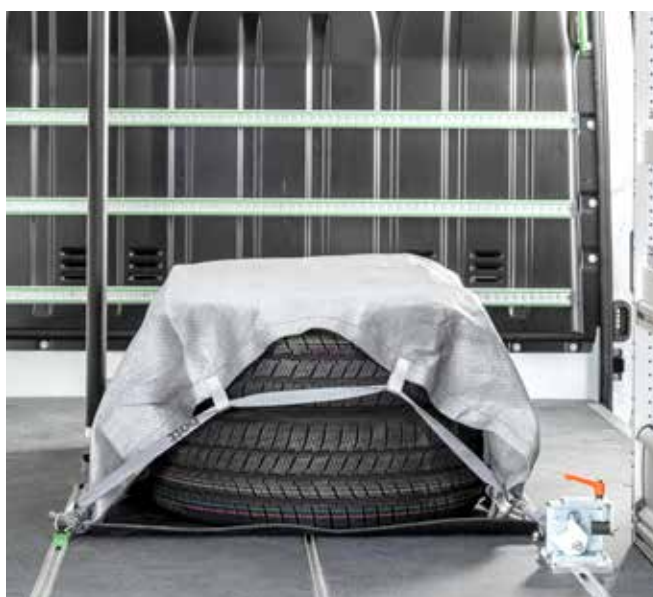


## Vehicle load restraints



### Load-securing nets

- Optimal for securing large items or multiple ones
- Various fittings available
- Depending on the configuration, can take extremely heavy loads (up to 800 daN)



### Load-restraint blankets

- For securing the load in the vehicle and on the flatbed
- Theft protection thanks to the opaque fabric
- Load capacity up to 300 daN

# Gas cylinder transportation



## Gas cylinder restraint system with strap

- For the safe transport of compressed gas canisters
- Complete sets consisting of lashing rails and matching ratchet straps
- Load capacity up to 500 daN



## Gas bottle cabinet with ventilation and sliding shelf

- Storage on a sliding shelf allows for simple and ergonomic removal of compressed gas cylinders
- Safe and secure transportation provided via integrated lashing rail and ratchet strap
- cabinet floor has integral vent



## Roof and floor vents

- Required for the safe transport of compressed gas canisters
- Provide reliable load space ventilation
- Depending on the version, can be used on the side wall, on the roof, or in the floor area
- Low profile design ensures vehicles can still be driven through a car wash

# Accessories

Mobile workstation

Storing and  
securing small parts

Always perfectly  
organised





## Accessories to suit every requirement

The following pages give some practical tips when working with your service vehicle. Your equipment is stowed away safely and the materials clearly organised in the bott vario3 in-vehicle equipment. You can work efficiently and reliably.

We can offer you numerous options for the storage of small parts and all kinds of equipment.

Our product range contains the right solution for almost every requirement. bott vario3 in-vehicle equipment really does offer a place for everything. Let us help you bring order and neatness into your daily routine.



# Mobile workstation

Mobile office solutions

Always perfectly organised

Everything to hand



## The mobile workshop

bott vario3 in-vehicle equipment offers a variety of possibilities for setting up your mobile workplace. With our solutions you can organise your equipment perfectly and have everything quickly to hand. Robust worktops in the service vehicle offer the perfect platform for a tradesman's activities.

bott vario3 offers a number of flexible possibilities for integrating a practical, robust workbench into your service vehicle. What's more, the folding and retractable worktops with vices will allow you to work effectively outside of the vehicle.

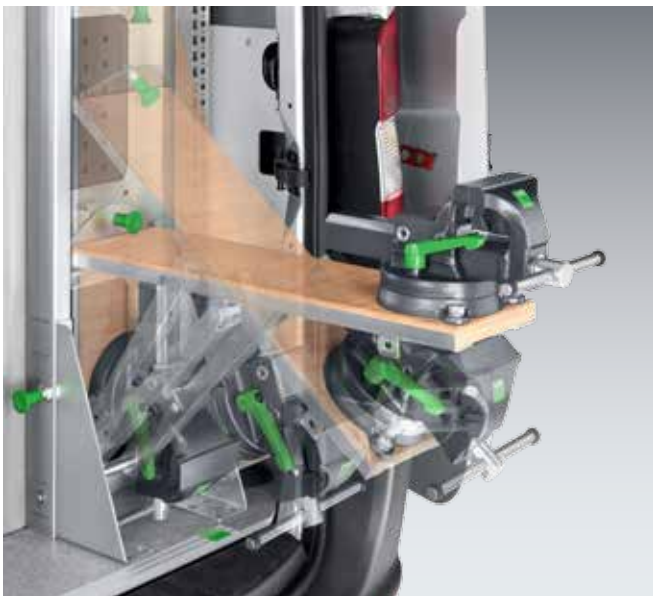


## The mobile office

For dealing with paperwork, the bott vario CarOffice is an excellent choice. You can attach it to the passenger seat and store your documents neatly inside.

With the storage pockets, you have a clear view of your customer contracts and other documents. Small parts and pens can be housed in the large bottBox. There's also an option to integrate a pull-out writing surface in your bott vario3 in-vehicle equipment if you need it for your assignment.

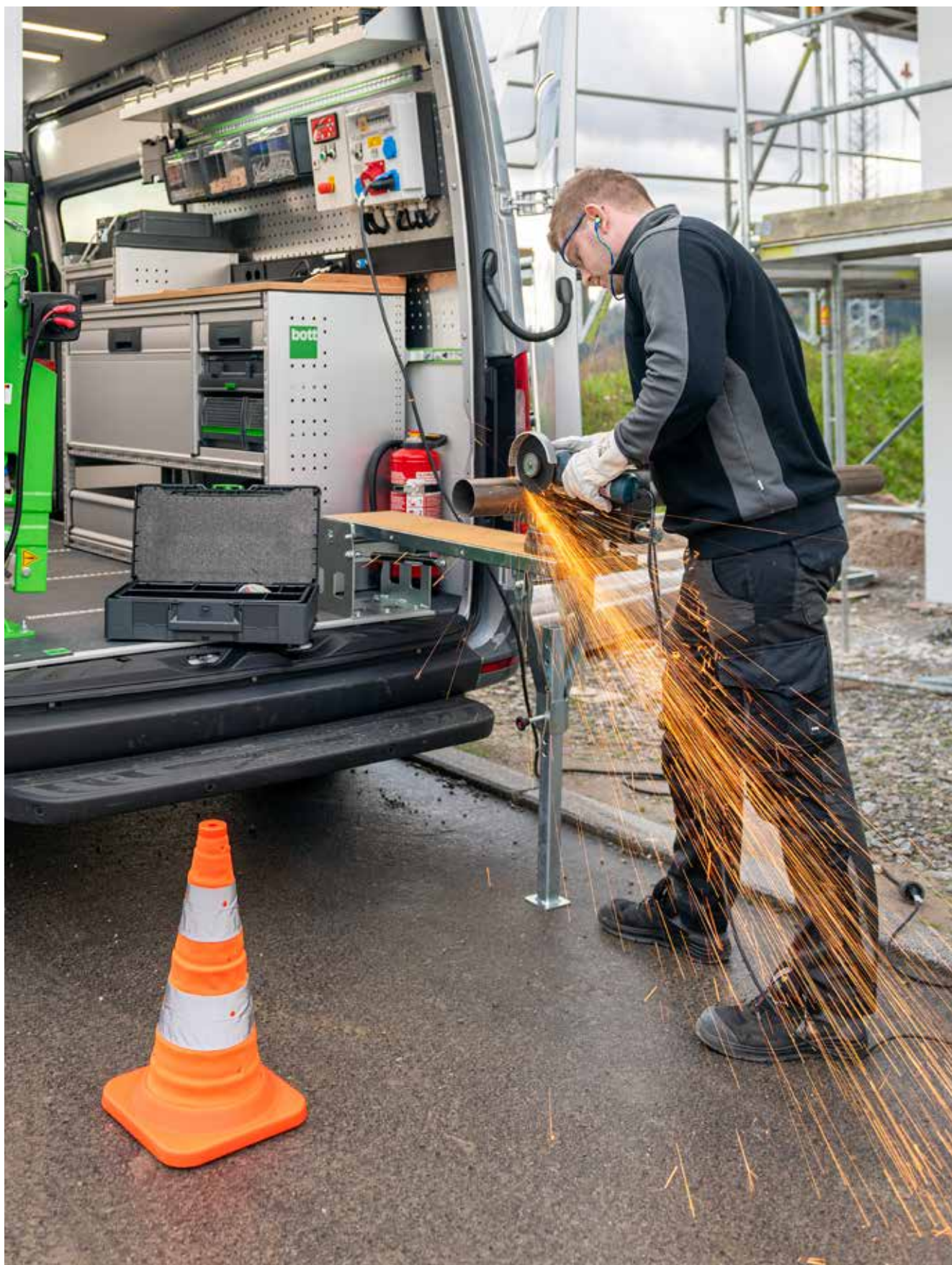
## Worktops with vice



### Folding worktops / retractable worktops

- For working with materials outside of the vehicle
- Optimal in combination with a vice
- Provides a convenient and ergonomic workbench area at the back of the vehicle
- Robust cross-laminated beech multiplex worktop with an oiled surface







## Mobile office



### Solutions for your mobile office

- If required, we can also convert your van into a mobile office
- We implement a full range of options, everything from a convenient office vehicle with desk and seating up to a fully equipped control centre with an independent power supply and high end communication facilities
- The addition of office space is an optimal solution for service applications that require a great deal of documentation
- On request we can provide a clear separation between workshop and office areas within the vehicle (black/white)







# Organisation systems

Secure storage of even  
the smallest parts

Custom drawer  
divider options

Perfect organisation with  
bottBoxes and perfo hooks



## An end to constantly searching for what you need

Subdivided drawers and bottBoxes create order and give an overview of the materials and equipment stored in your bott vario3 in-vehicle equipment. The drawers allow you to organise your tools and materials and keep their contents safe. Our smooth running and robust drawers have a high load capacity and can hold up to 70 kilograms. You can either subdivide the drawers with dividers or install removable small parts storage boxes.

Larger quantities of consumables are best stored in the bottBoxes. This storage box with integral base guide

is like a drawer that can be partially pulled out of the shelf or removed entirely if required.

The TiltBox from bott can be attached anywhere in the vehicle and allows rapid access to frequently used small parts. This gives you a clear overview at all times of the contents and you can tell at once if something has run out.

Our perforated wall system allows tool hooks and holders to be attached anywhere to the bott vario3 in-vehicle equipment and provides a clear and tidy system for storing your equipment.



## Drawer dividers



### Dividers and cross dividers

- Predefined kits for all drawer sizes and front heights permit quick and easy subdivision of the drawer both front to back and left to right
- Dividers and cross-dividers give a clear overview and reduce search times
- Plastic divider holders prevent rattle and minimise noise
- All drawer divider components can be purchased individually - so custom configurations are also possible

### Small parts storage boxes

- For the clear and orderly storage of small parts
- Predefined kits for all drawer sizes and front heights permit quick and easy subdivision of the drawer with small parts boxes of various sizes
- Rounded corners have been moulded into the base of the boxes so smaller parts are easy to remove.
- Suitable for both vario3 drawers with front heights of 100 mm, cubio drawers, Systainer<sup>3</sup> Organizers and varioCase service cases
- All the boxes can be labelled easily with the optional label clip

## Drawer dividers



### Further solutions

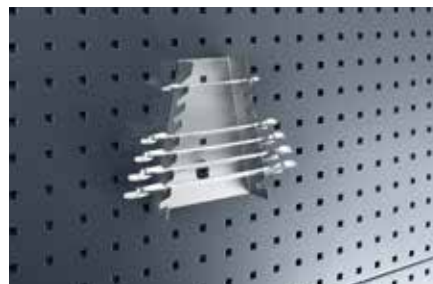
- Foam inlays for hand tools
- Storage trays
- Trough blocks





## Mobile and stationary use

- Vehicle side lining
- bott vario3 end frames
- Vehicle bulkheads
- Wall mounting
- Workbench
- Tool trolley
- Suspended cabinet



## perfo perforated and louvred panels

- The practical organisation system for vehicles and workshops
- Numerous different hooks and holders offer solutions for the most varied applications
- Developed for industrial applications, characterised by maximum stability and quality
- The perfo lock securing tab prevents the hooks from coming loose
- The perfo hole pattern can be found in many bott vario3 components and allows flexible use of perfo hooks and holders
- Rigid form, with top-hat reinforcement profile on the back
- Numerous holders for all kinds of tools and parts
- Hole spacing is also maintained across the panel edge

perfo



# Tiltbox



## TiltBox

- Practical small parts hinged storage bin for simple installation on bott vario3 end frames or perfo perforated panels
- Simple and secure operation thanks to central pushbutton
- If required, the transparent insert can be removed and the contents moved to the workplace
- Load capacity: 4 kg



**bottBox**

- Cleverly designed material box, designed for use in vehicles, workshops and on assembly lines
- Optimal for the storage of consumables and small parts
- The transparent front panel gives a clear view of the contents and amount inside
- The bottBoxes can be integrated optimally into the bott vario3 in-vehicle equipment by means of the bottBox shelf
- The guide rails mounted on the bottBox shelf allow the bottBoxes to be used as drawers

# Case Systems

Connects workshop,  
service vehicle and  
construction site

Perfectly integrated in the bott  
vario3 in-vehicle equipment

Widely used  
market standard





## Systainer<sup>3</sup> connects

With the practical and robust system case, you can neatly organise small parts and consumables. In the Systainer<sup>3</sup> you can transport everything comfortably and safely to your place of work. Cases can be inserted like drawers into the in-vehicle equipment using guide rails. The same guide rails have been integrated into the bott workshop equipment range so your Systainer<sup>3</sup> case can be stored in your workshop just as easily as your van.

The Systainer<sup>3</sup> is a widely-distributed market standard that has been designed to fit perfectly into the bott vario3 in-vehicle equipment. Festool, Tanos and bott developed the mobility concept together in order to provide the perfect service case. The cases are stackable and can be connected. The front of the Systainer<sup>3</sup> can be labelled in bank card format to show its contents.

## Case Systems



- A wide product offer and comprehensive range of accessories provide optimal solutions for any application
- Simple integration into bott vario3 in-vehicle equipment and bott workshop equipment thanks to integrated guide rails
- Promote efficient working through orderly and clear storage of tools, small parts and consumables
- Maximum mobility on the construction site and in use
- All cases are available in two widths and are optimally designed for use with the bott vario3 system widths
- Ideal in combination with the bott vario3 service case sliding shelf. The full extension slide allows efficient and unrestricted access to the contents of the case without having to remove the case from the in-vehicle equipment



## Systainer<sup>3</sup>

- Practical and sturdy system case for the secure storage and transport of small parts and consumables
- Multifunctional T-LOC: close, open, connect - with just one twist
- 2 integrated label holders, one either side of the carry handle (bank card format)
- Can be stacked and linked to all other Systainer products
- Load bearing capacity (single): 20 kg
- Load bearing capacity (when connected): 40 kg



## Systainer<sup>3</sup> Organizer

- Transparent lid allows you to see the contents and minimises search times
- Multifunctional T-LOC: close, open, connect - with just one twist
- 2 integrated label holders, one either side of the carry handle (bank card format)
- Can be stacked and linked to many other Systainer products
- Load bearing capacity: 20 kg



## bott varioCase

- High-quality service cases made from lightweight aluminium or robust sheet steel
- Versatile use due to comprehensive accessories
- Automatically locks when the lid is closed - preventing accidental spills
- Load bearing capacity: 20 kg



## Case Systems Systainer<sup>3</sup>



### Always to hand: The Systainer<sup>3</sup>

- The system case for the perfect organisation of power tools, hand tools and consumables
- A joint development by Festool, TANOS and bott, resulting in maximum benefit for the user
- The matching solution for any application through various heights and two widths
- Many different compartments, inserts or foam inlays structure the inside of the Systainer<sup>3</sup> case system
- Comprehensive range of system accessories available

# Case Systems Systainer<sup>3</sup>



## Front carry handle

- The new Systainer<sup>3</sup> can now also be carried upright thanks to the front carry handle. The carry handle also makes it easier to remove the case from the shelf system.



## Holder for use in vehicles

- Integrated guide rails allow the Systainer<sup>3</sup> to be integrated easily into the bott vario3 in-vehicle equipment or bott workshop equipment.



## Label holder

- 2 integrated label holders, one either side of the carry handle (bank card format). The labels can be inserted quickly - even when the case is closed.



## Stability

- The new Systainer<sup>3</sup> is even sturdier than its predecessor thanks to a third lid hinge and a raised double floor moulding.



## Stackable

- The Systainer<sup>3</sup> can be stacked and connected with all previous generation Systainer products.



## T-LOC latch

- Multifunctional T-LOC: close, open, connect - with just one twist.



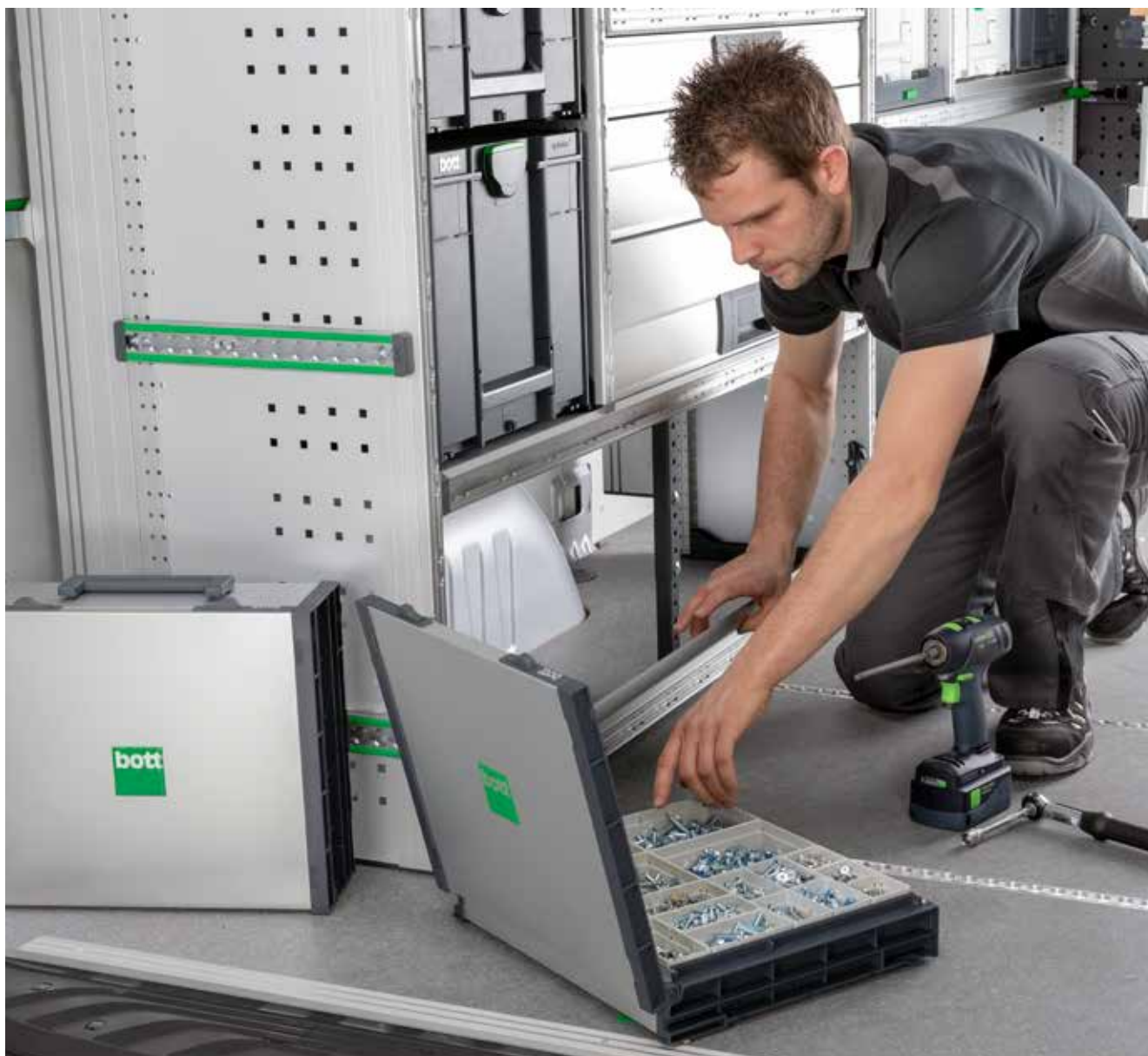
## Case Systems varioCase



### A sturdy friend: varioCase

- Extremely light and sturdy system case for the neat and orderly storage of small parts and consumables
- Optionally available in aluminium or sheet steel
- Simple integration into bott vario3 in-vehicle equipment and bott workshop equipment thanks to integrated guide rails
- Automatically locks when the lid is closed - preventing accidental spills
- A comprehensive range of accessories such as dividers and cross dividers and various configurations with small parts boxes are available

# Case Systems varioCase



# Lighting and power

Socket strips and on-board  
power supply

Internal and external  
LED lights

Inverters and special  
conversions





## Self-sufficiency with an on-board power supply

On site, many professional users rely on an independent, dependable power supply with mains voltage for their vehicle. This can also be easily implemented with bott vario3 in-vehicle equipment. We always pay attention to current norms and standards during the setup so that everything is installed safely and in compliance with the law. We ensure that all electrical installations are accepted and documented according to the current regulations. The maximum protection of the user is our top priority.

If required, we can integrate suitable solutions for extra lighting into your service vehicle. For example, an interior light, work lights or construction site warning lamps. They can be centrally controlled. To guarantee maximum safety and reliability, we exclusively use certified, high-quality components from leading manufacturers.



## Power supply



### Integration of electronic components

- Innovative complete solutions from one source: Planning, procurement, installation and integration of additional electronic equipment
- Setting up a safe 230 volt power supply in compliance with the relevant regulations by means of inverters or external power feeds or from generators driven from the vehicle engine
- Integration of supplementary vehicle lighting both inside and outside, such as work lights and flashing beacons



## Power supply





## Shelf lighting



### Shelf lighting

- Practical integration of LED lighting in and on the shelves
- The bott vario3 in-vehicle equipment uses profiles with integral grooves that allow LED lighting strips to be integrated in a concealed fashion
- Bright illumination on the contents of shelves makes it much easier to find what you are looking for



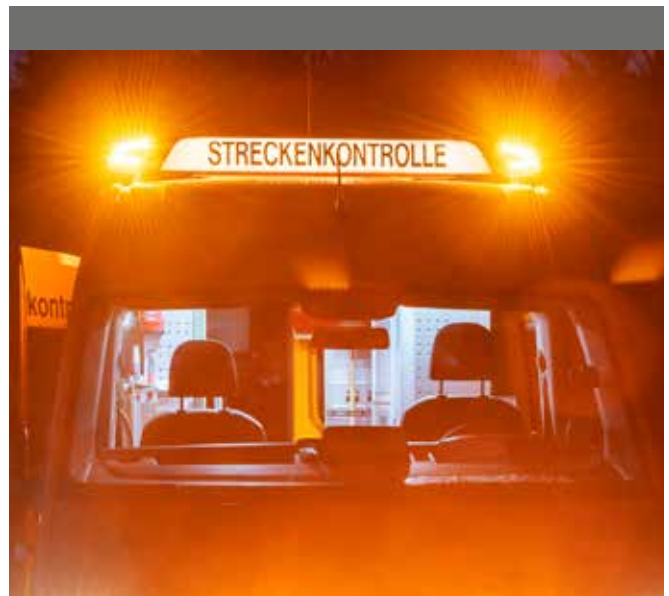
## Internal lighting

- Various solutions for optimal illumination of the load space
- Innovative solutions such as airline lashing rails with built-in LED lighting
- Minimal energy consumption for maximum light output





## Exterior lighting



### Exterior lighting

- Work lights to provide optimal lighting conditions when working outside the vehicle
- Signal lighting systems ensure safe working conditions
- Rotating beacons with the latest LED technology draw the attention of other road users
- LED flashing lights with multiple units that can be synchronized and have various flashing sequences
- High-quality warning light bar with high-power LED flashing modules and a low profile design

## Exterior lighting



# Roof rack systems

Maximum storage space

Light, stable and secure

Weatherproof aluminium





## Practical roof storage solutions

You'll find the most suitable load support system among our product range. Our roof rack systems are light, stable and secure. They offer maximum storage space on the vehicle roof and are efficient and durable. The aerodynamic components made of anodised aluminium minimise air resistance and wind noise.

With our comprehensive range of accessories you can extend the roof rack system according to your needs, for example with a ladder lift for ergonomic and convenient ladder storage. The bott ladder lifts are suitable for quick, simple and safe loading and unloading of the ladders secured on the vehicle roof.





# bottTainer

Theft protection

Fast and ergonomic access

Optimal storage  
space organisation



## Storage space organisation

bottTainer is excellent for organising storage space and restraining loads in the open cargo area. With the divided stowage boxes you always have a good overview of the equipment on your flatbed. You can access your materials and tools quickly and ergonomically at any time via the inner drawers, which are secured and protected with doors or shutters.

The robust frame construction lends the bottTainer high stability. The seals protect your equipment from water ingress and ensure it stays dry. With secure locks, your goods are always protected against theft. You can select your preferred bottTainer model from many different pre-configurations. Or you can let us configure it for you according to your individual requirements.



## Stability and safety

- High stability thanks to robust frame construction
- Hard-wearing surfaces:  
Sides and floors made of galvanized sheet steel
- Two robust locks secure transported goods against theft
- Raised feet guarantee protection from standing moisture



## Versatility

- Easy load restraining on the flatbed
- Available either with an aluminium chequer plate lid or aluminium roller shutter
- Various storage space layouts and configurations



### Order and convenience

- Drawer dividers for the clear storage of small parts
- Quick access to the most important equipment via side doors, roller shutters or internal drawers without climbing onto the flatbed
- High degree of weather and splash protection for tools and materials

### Further solutions for the flatbed

- Load-restraint blankets to secure the load on the flatbed, especially suitable for loose and irregularly shaped items that need to be transported
- Flatbed storage compartment for the rapid and easy securing of loads, to transport shovels, brooms and other tools
- Robust designs made of weatherproof materials





bott dialog-aktiv telesales team:

**+49 (0) 7971 / 251 – 251**

Or you can send your query by e-mail to: **info@bott.de**

**www.bott-group.com**

Bott GmbH & Co. KG, Bahnstraße 17, 74405 Gaildorf, Germany

dialog-aktiv: Phone: +49 (0)79 71 / 251-251, Fax: +49 (0)79 71 / 251-205